

All rights reserved by Kelsey Design Associates
 No part of this publication may be reproduced, stored in a retrieval system
 or transmitted in any form or by any means, without the prior permission of
 Kelsey Design Associates
 A full scale of drawings, all dimensions to be checked on site and any
 discrepancies reported to Kelsey Design Associates
 A full scale - unless Design - a Major Planning - Project Management

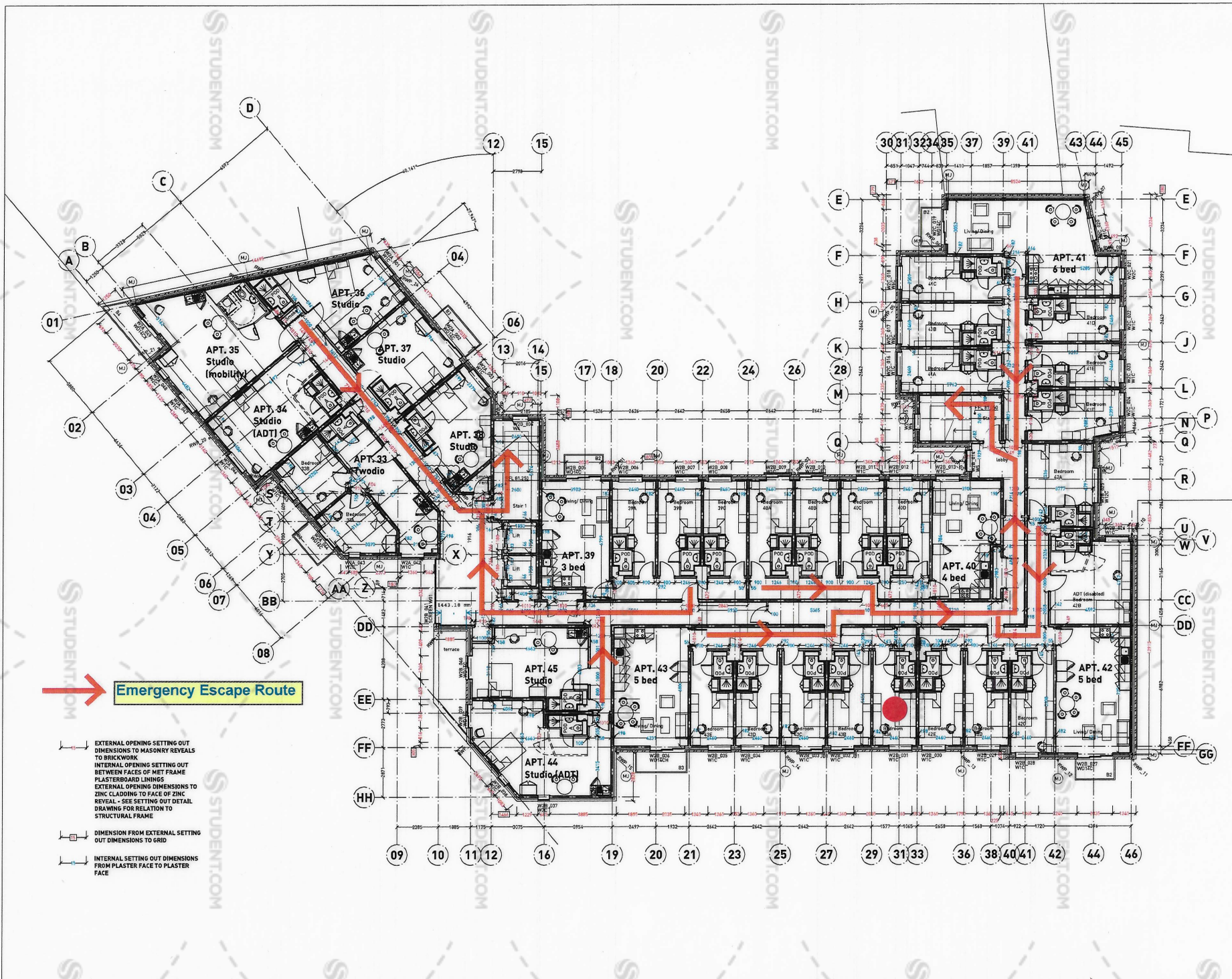
SVP DRAINAGE TO M&E CONSULTANTS DETAILS
IT IS IMPERATIVE THAT FOR 182 MET FRAME STRUCTURAL WALLS WITH ONE RESILIENT BAR, THE BAR IS FIXED TO THE BRICKS AS INDICATED ON THESE DRAWINGS IN ORDER TO ENSURE INTERNAL PLASTER DIMENSIONS OF ROOMS ARE MAINTAINED, STUDY BEDROOMS MIN. 2.660
ROOM ARRANGEMENT INDICATIVE ONLY - REFER TO IGA ROOM LAYOUT DRAWINGS FOR ALL ROOM LAYOUT DETAILS
 CURRENT REVISION INDICATED BY CLOUD

- Revision - Date**
- Rev A - 15/08/13
 Layout completely revised to Met Frame construction, Edward Street frontage moved back 600mm/corridor, lift/stair 1 room moved back 300mm.
 - Rev B - 17/09/13
 General revision to layout and grid lines
 - Rev C - 26/09/13
 Internal Structural Opening Setting Out dimensions added, key to dimensions added, Wall - Out 1-44 increase to structural 198, Wall - D10-44 corrected to 182, Out 17 corrected 100mm towards grid 18. Note regarding resilient bar to 182 walls added
 - Rev D - 02/10/13
 Issued for construction. Staircase 1 rear wall and associated gridline P moved by 502mm to enable staircase walls to align as requested by PAW. External floor level indicated in coordination with M&E consultants requirements. Grids 17 & 24 is structural Met Frame. Also wall between Apt 44 and Apt 45 corridor revised to be structural Met Frame. All as requested by PAW. Dry riser added to Stair 2
 - Rev E - 08/10/13
 Fire curtain added, lift openings added, room numbers amended to have inter reference, mobility and ADT (disabled) rooms amended as instructed. Finish floor levels added, movement joints and rainwater points added
 - Rev F - 08/11/13
 New rear roof rise done revised to 700mm & external fire enclosure removed as instructed by contractor, position of full landing window on stair 1 is revised, window, dry riser corridor fire indicated, balcony references & communal cupboard to lift lobby added
 - Rev G - 20/01/14
 Glass corridor door to block A, anti-theft lock 1 cross corridor wall revised to 100mm thick, all as required by fire consultant. Window referencing added
 - Rev H - 03/03/14
 Smoke vent added to Block A as required by B Control Apt 38 pod access door relocated, Apt 35 disabled bathroom repositioned with kitchen & studio layouts indicated, window W2A_047 & adjacent brick pier revised to LPA requirements, window W2A_047 corrected additional plaster face dims added to N&B partitions Rev 1 - 23/04/14
 Window W2A_049 to Apt 35 A adjacent brick pier revised to LPA Rev 1 - 18/05/14
 Door savings revised to stair 1 and block A corridor to enable mechanical venting to block A smoke shaft

- M2 Movement joint position
- Wall ties to movement joints to B 8mg details
- PAW to approve all movement joint locations



project no: **12/03** project title: **Impact 2**
 Edward Street SHEFFIELD
 drawing no: **005** drawing title: **LEVEL 2 PLAN**
 revision: **J** date: **Aug 2013** drawn by: **J** approved by: **J**
 scale: **1:100 @ A1**
 drawing status: **FOR CONSTRUCTION**



Emergency Escape Route

- EXTERNAL OPENING SETTING OUT DIMENSIONS TO MASONRY REVEALS TO BRICKWORK
- INTERNAL OPENING SETTING OUT BETWEEN FACES OF MET FRAME PLASTERBOARD LININGS
- EXTERNAL OPENING DIMENSIONS TO ZINC CLADDING TO FACE OF ZINC REVEAL - SEE SETTING OUT DETAIL DRAWING FOR RELATION TO STRUCTURAL FRAME
- DIMENSION FROM EXTERNAL SETTING OUT DIMENSIONS TO GRID
- INTERNAL SETTING OUT DIMENSIONS FROM PLASTER FACE TO PLASTER FACE